

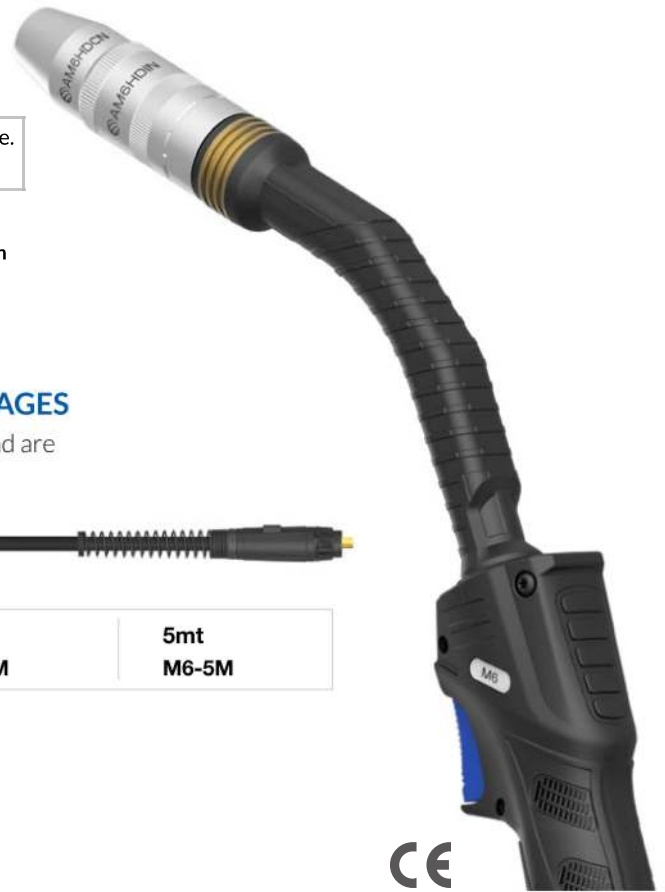
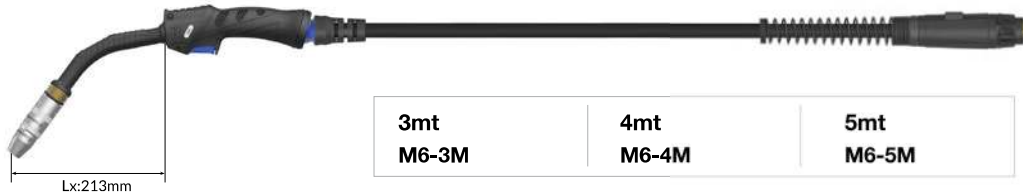
M6 ^{New} Air-Cooled Mig Welding Torch

Ratings:	430A CO ₂ , 400A mixed gas M21, EN60974-7 @ 60% duty cycle. 0.9mm-2.0mm wires
----------	---

An Indestructible 400 Amp Air-Cooled Production Torch.
Perfect for high amps, high deposition, pulse, and high duty applications with 1.2mm and 1.6mm wires.
A retrofit heat shield is available for high reflected heat applications.

ARC M HIGH PERFORMANCE MIG TORCH PACKAGES

M6 Torches are supplied with a Euro termination as standard and are supplied 'ready to weld' with all wear parts fitted.



Wear Parts

Nozzle - 2 Piece

Part Number	Description	Bore	Wall	Material
A AM6HDTN	Tapered Nozzle (Part 2)	13mm	3.5mm	Copper
•AM6HDCN	Conica Nozzle (Part 2)	15mm	3.5mm	Copper
AM6HDCYN	Cylindrical Nozzle (Part 2)	23mm	3.5mm	Copper
A1•AM6HDNI	Nozzle Insulator(Part 1)			Copper

Nozzle - Single Piece

Part Number	Description	Bore	Wall	Material
A2 AM6TN	Tapered Nozzle / Insulator Assy	13mm	2.5mm	Copper
AM6CN	Conical Nozzle / Insulator Assy	15mm	2.5mm	Copper
AM6CYN	Cylindrical Nozzle / Insulator Assy	23mm	2.5mm	Copper

B Contact Tips

Part Number	Description	Size (mm)	Wire Size (mm-inch)	Material
Standard Series				
AM6CT09	Contact Tip	M12*40.5	0.9-0.035	CuCrZr
AM6CT10	Contact Tip	M12*40.5	1.0-0.040	CuCrZr
•AM6CT12	Contact Tip	M12*40.5	1.2-0.045	CuCrZr
AM6CT14	Contact Tip	M12*40.5	1.4-0.055	CuCrZr
AM6CT16	Contact Tip	M12*40.5	1.6-0.063	CuCrZr
AM6CT20	Contact Tip	M12*40.5	2.0-0.080	CuCrZr
A Series				
AM6CT10A	Contact Tip	M12*40.5	1.0-0.040	CuCrZr
AM6CT12A	Contact Tip	M12*40.5	1.2-0.045	CuCrZr
AM6CT16A	Contact Tip	M12*40.5	1.6-0.063	CuCrZr
AM6CT20A	Contact Tip	M12*40.5	2.0-0.080	CuCrZr
AMC6CT10A	Contact Tip	M12*40.5	1.0-0.040	Copper
AMC6CT12A	Contact Tip	M12*40.5	1.2-0.045	Copper

C Tip Adaptors

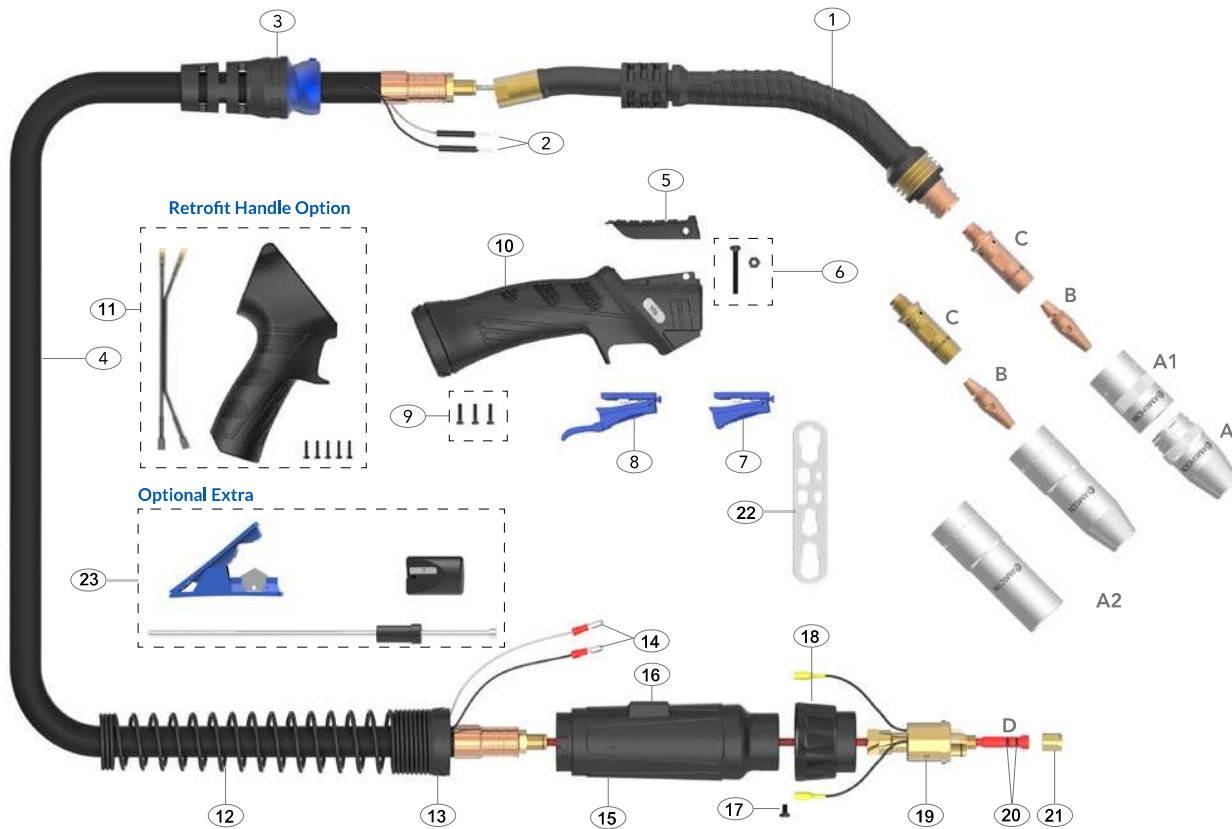
Part Number	Description	Material
•AM6TAC	Tip Adaptor High Performance	CuCrZr
AM6TAB	Tip Adaptor	Brass

D Liners

Part Number	Description	Wire Size
•AM6SL-1012-30	Steel Liner x 3mt	1.0-1.2mm
•AM6SL-1012-40	Steel Liner x 4mt	1.0-1.2mm
•AM6SL-1012-50	Steel Liner x 5mt	1.0-1.2mm
AM6SL-16-30	Steel Liner x 3mt	1.6mm
AM6SL-16-40	Steel Liner x 4mt	1.6mm
AM6SL-16-50	Steel Liner x 5mt	1.6mm

•Denotes torch package standard wear part set-up

SuperSoft -20 Premium Power Cables
 Perfect for extreme subzero working conditions



Spare Parts

Part Number	Description
1 AM6001	Swan Neck Assembly
2 AM1521	Cable Terminal
3 AMS8017	Handle Cable Support c/w Ball Joint
4 AM6003CW-30	Power Cable Assembly x 3mt
AM6003CW-40	Power Cable Assembly x 4mt
AM6003CW-50	Power Cable Assembly x 5mt
5 AM2515-C	Handle Control Cover
6 AMDMNS	Screw and Nut
7 AM2516	Microswitch Standard Trigger
8 AM2516L	Microswitch Extended Trigger
9 AMSP1-1	Screw Pack
10 AM2515	Handle and Lock Nut Assembly
12 AM8026	Housing Spring
13 AM8028	Housing Lock Nut
14 AM1522	Cable Terminal Male
15 AMT5022	Gun Plug Housing
16 AMF8017	Large Housing Wire Cover
17 AM1526	Gun Plug Screw
18 AM1519	Gun Plug Nut
19 AMB1528	Gun Plug Body
20 AMLOR	Liner 'O' Ring

Part Number	Description
21 AM1826	Liner Retaining Nut
22 AMWS	Wear Parts Spanner
Optional Extra	
23 AMCLST-KITS	Combi-Liner Set-up kit

Retrofit Handle Option

Part Number	Description
11 AMMP2515	Pistol Handle Assembly

Welding with Soft Wires

For welding with Aluminum wires use a Combi-liner (page 47-48). Optimum installation is achieved when using the Combi-liner set-up kit.