

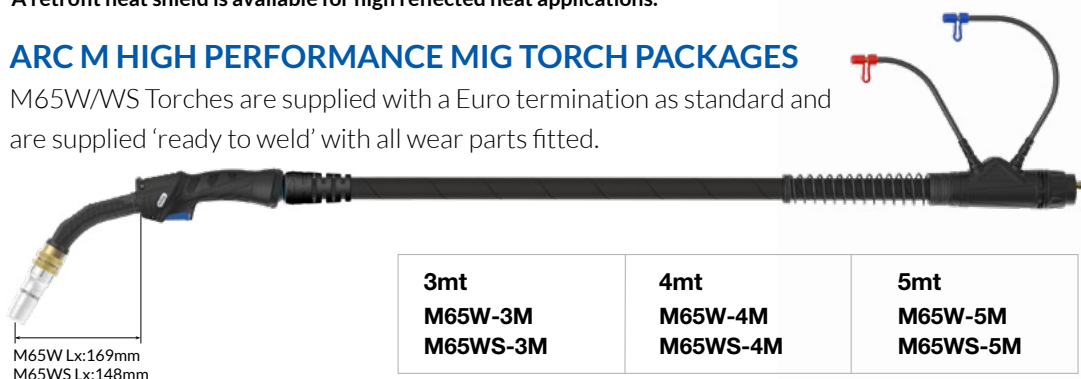
M65W/M65WS Liquid-Cooled Mig Welding Torch

| | |
|----------------------------|---|
| M65W/ M65WS Ratings: | 580A CO ₂ , 560A mixed gas M21, 400A pulse @100% Max. Load 25KW with 1600W liquid cooler, 0.9mm-2.0mm wires |
| | 550A CO ₂ , 520A mixed gas M21, 360A pulse @100% Max. Load 23KW with 1200W liquid cooler, 0.9mm-2.0mm wires |

Ideal for high deposition and pulse applications with high reflected heat.
Fitted with a long neck as standard with an optional shorter version.
A retrofit heat shield is available for high reflected heat applications.

ARC M HIGH PERFORMANCE MIG TORCH PACKAGES

M65W/WS Torches are supplied with a Euro termination as standard and are supplied 'ready to weld' with all wear parts fitted.



M65W Lx:169mm
M65WS Lx:148mm

| | | |
|---|---|---|
| 3mt M65W-3M M65WS-3M | 4mt M65W-4M M65WS-4M | 5mt M65W-5M M65WS-5M |
|---|---|---|



Wear Parts

Nozzles

| Part Number | Description | Bore | Wall | Material |
|-----------------|---|------|-------|----------|
| A • AMN55WCN | Conical / Insulator Assy | 15mm | 3.0mm | Copper |
| AMN55WTN | Tapered / Insulator Assy | 13mm | 3.0mm | Copper |
| AMN55WCYN | Cylindrical/Insulator Assy | 17mm | 3.0mm | Copper |
| A1 • AMN55WCN-C | Conical Nozzle c/w Insulator & Retaining Ring | | | |
| AMN55WTN-C | Tapered Nozzle c/w Insulator & Retaining Ring | | | |
| AMN55WCYN-C | Cylindrical Nozzle c/w Insulator & Retaining Ring | | | |

B Nozzle Retaining Rings

| Part Number | Description | Size | Material |
|-------------|--------------------------------|--------|----------|
| • AMN6WCNR | Nozzle Retaining Ring-Pull Off | 30.5mm | Brass |

C Contact Tips

| Part Number | Description | Size (mm) | Wire Size (mm-inch) | Material |
|------------------------|-------------|-----------|---------------------|----------|
| Standard Series | | | | |
| AM6WCT09 | Contact Tip | M10*35.5 | 0.9 - 0.035 | CuCrZr |
| AM6WCT10 | Contact Tip | M10*35.5 | 1.0 - 0.040 | CuCrZr |
| • AM6WCT12 | Contact Tip | M10*35.5 | 1.2 - 0.045 | CuCrZr |
| AM6WCT14 | Contact Tip | M10*35.5 | 1.4 - 0.055 | CuCrZr |
| AM6WCT16 | Contact Tip | M10*35.5 | 1.6 - 0.063 | CuCrZr |
| AM6WCT20 | Contact Tip | M10*35.5 | 2.0 - 0.080 | CuCrZr |
| A Series | | | | |
| AM6WCT10A | Contact Tip | M10*35.5 | 1.0 - 0.040 | CuCrZr |
| AM6WCT12A | Contact Tip | M10*35.5 | 1.2 - 0.045 | CuCrZr |
| AM6WCT16A | Contact Tip | M10*35.5 | 1.6 - 0.063 | CuCrZr |
| AM6WCT20A | Contact Tip | M10*35.5 | 2.0 - 0.080 | CuCrZr |
| AMC6WCT10A | Contact Tip | M10*35.5 | 1.0 - 0.040 | Copper |
| AMC6WCT12A | Contact Tip | M10*35.5 | 1.2 - 0.045 | Copper |

• Denotes torch package standard wear part set-up

D Tip Adaptors

| Part Number | Description | Material |
|----------------|-------------------------------|----------|
| • AM6OSWTAC-20 | High Performance 2.0mm Recess | Copper |
| AM6OSWTAC-45 | High Performance 4.5mm Recess | Copper |
| AM6OSWTAB-20 | Tip Adaptor 2.0mm Recess | Brass |
| AM6OSWTAB-45 | Tip Adaptor 4.5mm Recess | Brass |

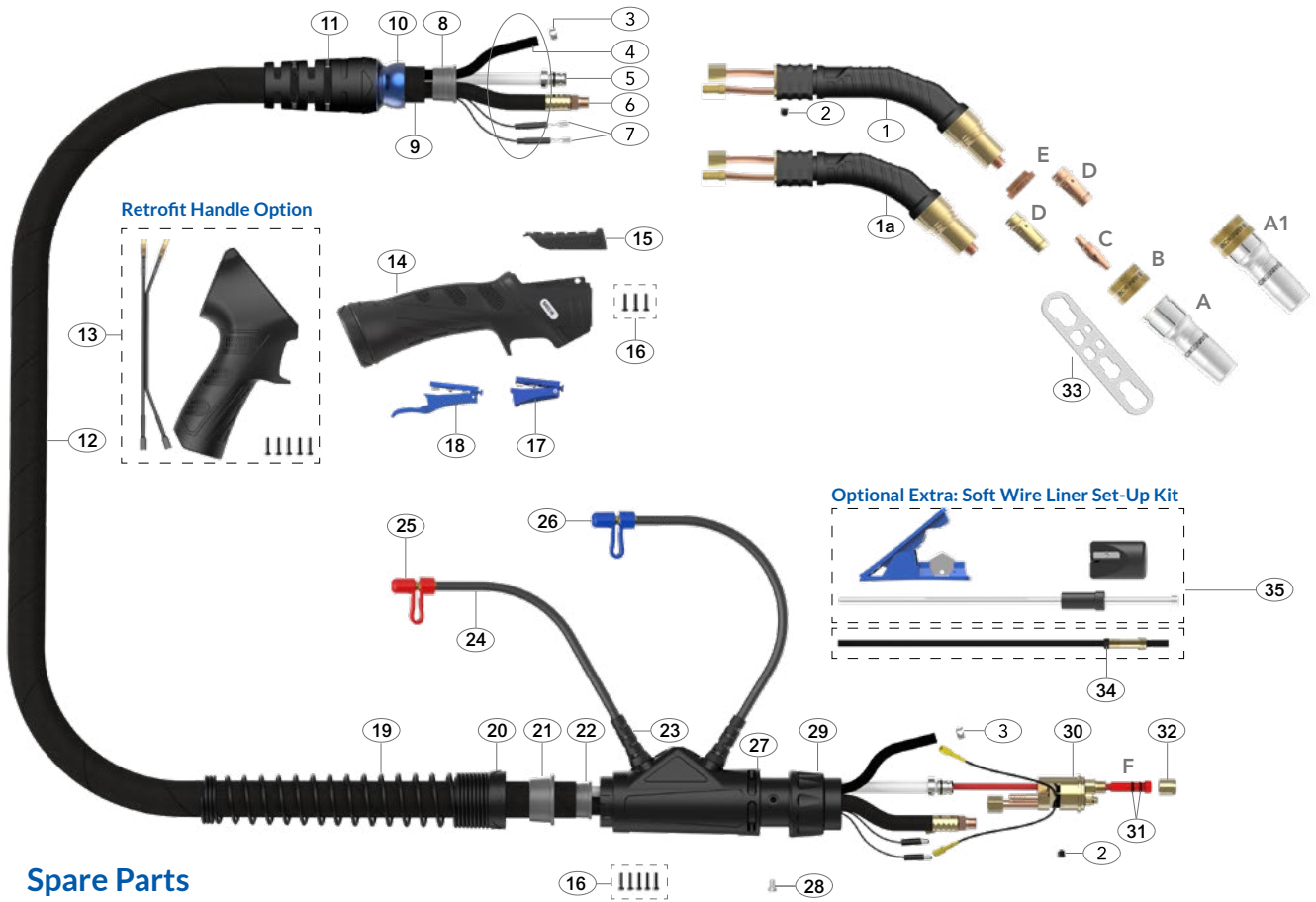
E Tip Adaptor Insulators

| Part Number | Description |
|-------------|-----------------------|
| • AM55WTAI | Tip Adaptor Insulator |

F Liners

| Part Number | Description | Wire Size |
|-----------------|-----------------------|-----------|
| • AM6SL-1012-30 | Steel Liner x 3mt | 1.0-1.2mm |
| • AM6SL-1012-40 | Steel Liner x 4mt | 1.0-1.2mm |
| • AM6SL-1012-50 | Steel Liner x 5mt | 1.0-1.2mm |
| AM6SL-16-30 | Steel Liner x 3mt | 1.6mm |
| AM6SL-16-40 | Steel Liner x 4mt | 1.6mm |
| AM6SL-16-50 | Steel Liner x 5mt | 1.6mm |
| AM6SL-20-30 | Steel Liner x 3mt | 2.0mm |
| AM6SL-20-40 | Steel Liner x 4mt | 2.0mm |
| AM6SL-20-50 | Steel Liner x 5mt | 2.0mm |
| AM6OSWL-1012-30 | Soft Wire Liner x 3mt | 1.0-1.2mm |
| AM6OSWL-1012-40 | Soft Wire Liner x 4mt | 1.0-1.2mm |
| AM6OSWL-1620-30 | Soft Wire Liner x 3mt | 1.6-2.0mm |
| AM6OSWL-1620-40 | Soft Wire Liner x 4mt | 1.6-2.0mm |

For alternate liner options please refer to page 46-48



Spare Parts

| Part Number | Description |
|-------------|--|
| 1 | AM6502 M65W Swan Neck Assembly 45° |
| 1a | AM6502S M65WS Swan Neck Assembly 45° |
| 2 | AM6X5 Outer Liner Retaining Screw |
| 3 | AM15400023 Water Hose Clamp 10mm |
| 8 | AMS8010 Canvas Cover Retainer |
| 10 | AM3208-1 Ball Joint |
| 11 | AMS3208-S Cable Support With Nut |
| 14 | AM2515 Handle and Lock Nut Assembly |
| 15 | AM2515-C Handle Control Cover |
| 16 | AMSP1-1 Screw Pack |
| 17 | AM2516 Microswitch Standard Trigger |
| 18 | AM2516L Microswitch Extended Trigger |
| 19 | AM8027 Cable Support Spring |
| 20 | AM8028 Housing Lock Nut |
| 21 | AM8009 Canvas Cover Clamp |
| 22 | AM8010 Canvas Cover Retainer |
| 23 | AM1820 Hose Support |
| 24 | AM5017 Water Outlet Hose Assembly |
| 25 | AM80320 Red Cap Stopper |
| 26 | AM80310 Blue Cap Stopper |
| 27 | AM5022 Housing Assembly |
| 28 | AM1526 Gun Plug Screw (M4 x 0.7) |
| 29 | AM1519 Gun Plug Nut |
| 30 | AM5098 Water-Cooled Plug Body Assembly |
| 31 | AMLOR Liner 'O' Ring |
| 32 | AM1826 Liner Retaining Nut |
| 33 | AMWS Wear Parts Spanner |

| Part Number | Description |
|-----------------------|--|
| Optional Extra | |
| 34 | AMOSWLG Soft Wire Liner Gasket |
| 35 | AMOSW-LINER-T Soft Wire / Combi-Liner Set-up Kit |

Retrofit Handle Option

| Part Number | Description |
|-------------|---------------------------------|
| 13 | AMMP2515 Pistol Handle Assembly |

Cable Parts

| Description | Part Number | | | |
|-------------|---------------------------|-----------|-----------|-----------|
| | 3mt | 4mt | 5mt | |
| 4 | Water Inlet Hose Assembly | AM5012-30 | AM5012-40 | AM5012-50 |
| 5 | Outer Liner Assembly | AM6008-30 | AM6008-40 | AM6008-50 |
| 6 | Power Cable Assembly | AM6015-30 | AM6015-40 | AM6015-50 |
| 7 | Switch Lead Assembly | AM5010-30 | AM5010-40 | AM5010-50 |
| 9 | Canvas Cover Assembly | AM5019-30 | AM5019-40 | AM5019-50 |
| 12 | Complete Cable Assembly | AM6006-30 | AM6006-40 | AM6006-50 |

Welding with Soft Wires

For welding with Aluminum wires use a Soft Wire / Combi-Liner (page 47-48). Optimum installation is achieved when using the Soft Wire / Combi-Liner set-up kit.